



Music has the power to bring people together, which is why we are proud to sponsor Peterborough New Horizons Bands. This organization plays a vital role in our community by providing a welcoming environment for members to engage with one another in collaboration and artistic expression. Ultimately, PNHB enriches the fabric of our community and deepens personal connections while members strengthen existing friendships and form new ones. We invite you to expand your horizons and join in the joy of music-making. If you have questions about real estate, feel free to visit us in the lobby during intermission or give us a call. We'd love to chat and see how we can assist you!



*Fran Chris & Dave*

**Christopher Cocks**  
 REALTOR®  
 705-927-2735  
 ChrisCocks@RoyalLePage.ca

**Fran Allen**  
 Broker  
 705-927-2770  
 FranAllen@RoyalLePage.ca

**David Tomlinson**  
 REALTOR® MUS. BAC.  
 705-772-9468  
 David.A.Tomlinson@gmail.com



**www.FranAllen.com**



Friday, May 29, 2026  
 in Concert

**The Green, Jubilee, Allegro, Skylark, and  
 Odyssey Bands**

**Major Advertiser**



**Benefactor**



Empowering you to live at home  
 in the City and County of Peterborough

## Land Acknowledgement

We respectfully acknowledge that we are on the traditional territory of the Mississauga Anishinaabeg. We offer our gratitude to our First Nations for their care for, and teachings about, our earth, and our relations. May we honour those teachings.

(Acknowledgement provided by Trent University)



### PNHB President's Message:

Welcome to Peterborough New Horizons Bands (PNHB) Spring Winds concert. Thank you for coming out to support our members and our benefactor Community Care Peterborough. The conductors and coaches of PNHB have supported our members with instruction and guidance which will culminate in the music program that you will hear tonight. Thank you to all of the volunteers who have worked very hard to make this event a success.

Please enjoy this evening of wonderful music provided by the members of the five bands of PNHB.

*Marcia Johnston*



We are grateful to the band and its members for choosing to support a local charity and for their ongoing commitment to enriching our community through music. Community Care Peterborough is proud to serve seniors

and adults living with disabilities across the city and county of Peterborough, helping people stay independent, connected, and supported close to home. We sincerely thank the Peterborough New Horizons Bands for their generosity and for the joy they bring to our community.

Thanks so much!

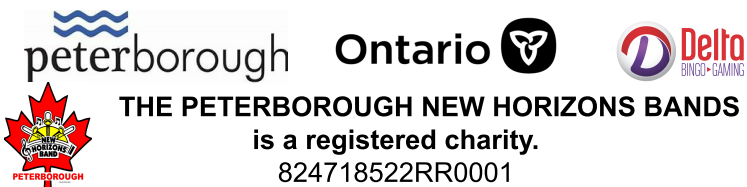
*Pamela (Pam) Beauchamp*

Community Care Ptbo.

Marketing & Fund Development Coord.

### PNHB Gratefully Acknowledges 2024 - 2025:

- ★ Memorial Donation
- ★ Personal Donations
- ★ Legacy Gifts
- ★ Grants
- ★ Volunteer and Event Fundraising



**Enjoy Yourself – AND support PNHB!**

# KELSEYS

*original*

# ROADHOUSE

1209 Lansdowne Street West,  
Peterborough, ON K9J 7M2

**Phone: (705) 749-1367**  
**[www.kelseys.ca](http://www.kelseys.ca)**

### **Just dine at Kelseys .... And sign your bill.**

Kelseys will donate 10% of your total food bill to PNHB. All you do is show your server that on the back of your bill you have written "PNHB" and your signature. This generous offer is available to anyone who dines at this location of Kelseys throughout the year.

*If music be the food of love, play on.*

— William Shakespeare



**Blowes & Stewart**  
TRAVEL GROUP LTD.

*Making travel dreams come true since 1949*

**YOUR ONE-STOP TRAVEL EXPERTS FOR EVERY DESTINATION**

**CONTACT US TO BOOK YOUR NEXT TRIP!**

Website: [bstvacations.ca](http://bstvacations.ca)  
Email: [info@bstvacations.ca](mailto:info@bstvacations.ca)  
Phone: 1 800 561 4275

1 800 561 4275 / 705 743 8683      232 Brock Street, Peterborough, ON      bstvacations.ca      TICO #50025039



**VISIT**



**ZEYTOON RESTAURANT**  
724 Water St. (705) 750-0503  
[zeytoon.peterborough@gmail.com](mailto:zeytoon.peterborough@gmail.com)

For Delicious Shawarma, Falafel and Kebobs  
Friendly Service  
Eat In or Take Out  
South East Corner of Parkhill Rd and Water St



**THE GOOD BAKER YPQ**  
BREAKFAST LUNCH PASTRIES

590A Skyway Dr.,  
Ptbo, ON  
(705) 775-2727

We're happy to support Peterborough New Horizons Bands...

*Come on down to the Peterborough Airport for a bite to eat and watch the planes!*

## THE POWER OF YOUR DONATION

Good evening and thank you for your fondness for music and support for Peterborough New Horizons Bands (PNHB). Our love to learn, share, and express beautiful music together is the strength of our five concert bands and ensembles.

PNHB is a community builder. Our 24 years of making music is part of the real glue that holds communities together. Along with food banks, service clubs, school groups, volunteers, good neighbours...and even the little civilities like holding doors open for others creates a true "home town."

PNHB is more than people playing music. It is an inclusive social group rooted in music. Welcoming and accessible to new members and a source of joy for new and experienced musicians. One member once even said, "It saved my life."

Playing an instrument in PNH B has the power to help overcome feelings of isolation, loneliness, and a sense of not belonging. PNH B, for the 200-some members, is good for the mind and body. Playing in a concert band involves focus, coordination, physical movement, managing breathing, and improving lung power. AND big smiles for musical achievement in a friendly environment.

How can you help PNH B remain healthy and sustained? Consider PNH B in your donation giving and donation planning.



### Make a difference with:



Monetary Donations ~ Recurring Donations  
Memorial Gifts ~ Securities/Stock Donation

Planned and Legacy Giving

Donate at [www.pnhb.ca/donations](http://www.pnhb.ca/donations)  
Further information email at [info@pnhb.ca](mailto:info@pnhb.ca)



I am helping Kawartha Land Trust...

*Save it for them.*

natural lands  
wildlife habitat  
native plants  
the landscape  
working lands  
lakes, rivers & wetlands  
the Kawarthas

future generations  
wildlife  
species at risk  
our neighbours  
farmers  
adventurers  
everyone

Dance Nature Sanctuary

**You can help, too. [kawarthalandtrust.org/save-it-for-them](http://kawarthalandtrust.org/save-it-for-them)**

This project was undertaken with the financial support of:  
Ce projet a été réalisé avec l'appui financier de :



Environment and  
Climate Change Canada

Environnement et  
Changement climatique Canada



**LOVE WINE?  
MAKE IT YOUR OWN.**

**Join us for a  
Great Winemaking  
Experience!**



392 Brock Street  
(On the corner at Park St.)  
Peterborough, Ontario  
K9H 2R5  
(705) 749-9463  
[www.wineshoppeonpark.ca](http://www.wineshoppeonpark.ca)  
[info@wineshoppeonpark.ca](mailto:info@wineshoppeonpark.ca)

## FreeFlo Physiotherapy



**Your local physio team**

**11 Burnham St., Lakefield  
705-652-6666  
[www.freeflophysio.ca](http://www.freeflophysio.ca)**



*established 1970*

*The Original Tow and Go Cooler Rentals*

**IDEAL FOR TOURNAMENTS, FESTIVALS, WEDDINGS,  
PERISHABLE FOODS & DRINKS, DRAFT BEER, & MORE**

**CALL US AT 705 930-0997**

# 2026 SUVs now with 3 Years Scheduled Maintenance.\*\*

Enjoy up to 3 years of peace of mind on  
our latest Taos, Tiguan, Atlas, and Atlas  
Cross Sport.



Peterborough  
Volkswagen



705-745-2413



500 Towerhill Road  
Peterborough, ON K9J 7R8

\*\*Conditions may apply. See dealer for full details.



SULLIVAN LAW<sub>PTBO</sub>

Your **Lawyer.**  
Your **Partner.**

Practical advice. Thoughtful solutions.  
For life, business and everything in between.

#### OUR PRACTICE AREAS

-  Real Estate
-  Wills
-  Estates
-  Family Law
-  Corporate
-  Mediation
-  Notary Services

Local expertise.  
Personal service.  
Positive impact.



#### LET'S CONNECT

-  362 Queen Street  
Peterborough, Ontario K9H 3J6
-  705-745-0571
-  [hello@sullivanlawptbo.ca](mailto:hello@sullivanlawptbo.ca)
-  [sullivanlawptbo.ca](http://sullivanlawptbo.ca)



Proud to be a  
Certified B Corporation.  
We believe in using  
business as a force  
for good.

PUT 50 YEARS OF EXPERIENCE TO WORK FOR YOU

# Sylvia James

SALES REPRESENTATIVE

Life is all about stages, growth and new experiences. Deciding whether to stay or sell is a very tough decision. Right-sizing is another wonderful stage of life, the ideal time to do it is when we're in good health and can weigh up and make choices that are beneficial for us. Let me help and guide you through this stage, to your next nest.

As my clients say  
"Never fear ...Sylvia's here"



YOUR SENIORS REAL ESTATE SPECIALIST

## MY SERVICE MENU INCLUDES

Peterborough & Toronto Real Estate Board Member. Showcasing your home on the Peterborough, Toronto, Durham Real Estate Boards and Social Media

- Experienced offer negotiator
- pre-list home inspection
- home staging/styling
- cleaning services
- professional photos / virtual tour / floor plan / printed brochures

CALL NOW FOR A FREE MARKET EVALUATION/CONSULTATION!



Direct: 705-768-7788  
sylviajames@hotmail.ca

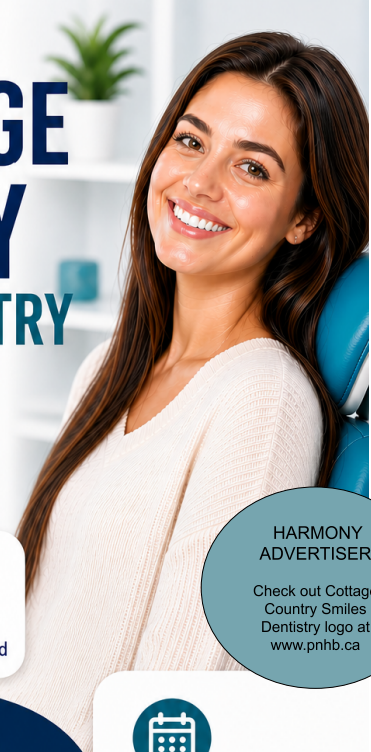


Not intended to solicit buyers/sellers currently under contract.

It's taken me all my life to learn what not to play.  
— Dizzy Gillespie



# COTTAGE COUNTRY SMILES DENTISTRY



Your Smile, Our Priority.

Quality dental care in a comfortable environment. Because every smile deserves the best.

 Experienced Dentists	 Advanced Technology	 Gentle & Patient-Focused
---	--	---

HARMONY ADVERTISER  
Check out Cottage Country Smiles Dentistry logo at [www.pnhb.ca](http://www.pnhb.ca)

## OUR SERVICES

-  General Dentistry
-  Preventative Dentistry
-  Emergency Dental Care
-  Exams and Cleanings

  
Healthy smile,  
*confident you.*

We're here to help you smile with confidence at every visit.

  
**BOOK YOUR APPOINTMENT TODAY!**

We're here to keep you smiling.

  
**705-876-1668**  
Call us today!

  
308 Park St. N,  
Peterborough, ON  
K9J 3W5  
Conveniently located for our community.

  
[www.cottagecountrysmiles.ca](http://www.cottagecountrysmiles.ca)  
Visit our website to learn more about our services.

In learning you will teach and in teaching you will learn.  
— Phil Collins





# central smith

We dream in ice cream.

## OPEN NOW!



### Come Visit Our Parlour

**Open Daily**

April 27<sup>th</sup> - October 11<sup>th</sup>

11:00 AM - 8:30 PM

739 Lindsay Road  
Selwyn, ON. K9J 0C5



Facebook  
@centralsmith



Instagram  
@central\_smith



TikTok  
@central\_smith

Craving Something Sweet?  
Discover More Online!



centralsmith.ca • 705-742-5867



## IG WEALTH MANAGEMENT



# TONY BOWEN

**B.A.S, CFP, RRC**

*Executive Financial Consultant*

*Providing Comprehensive Wealth Management*

*Since 1997*

1743 LANSDOWNE STREET W.

PETERBOROUGH, ON K9K 1R2

TEL: (705) 876-1282 [Tony.Bowen@ig.ca](mailto:Tony.Bowen@ig.ca)

The beautiful thing about learning is that no-one can take it away from you."

— B.B. King





- Windows
- Fences
- Garages
- Entrance Doors
- Roofing
- and more

Ask about Financing

HARMONY  
ADVERTISER

Check out Merritt  
Home Hardware  
logo at  
[www.pnhb.ca](http://www.pnhb.ca)



**MERRETT**

**Home hardware building centre**

Lansdowne at Kawartha Heights Phone 705-743-3553

**Canada's Project Experts**

Music produces a kind of pleasure which human nature cannot do without.

— Confucius

**P**erforming  
**A**RTs  
**L**akefield

A 45 year tradition to bring entertainment in the Lakefield area is

**SEEKING DIRECTORS**

**JOIN THE BOARD** to experience the behind-the-scenes activities, including a glass of wine with the performers after each show!

Performing Arts Lakefield is a volunteer-run organization dedicated to 5 shows per season of world class entertainment.

Each performance is booked, organized and run by dedicated volunteers.

Interested in a fun, captivating organization, then this opportunity is for you!

Reach out to us at  
[info@performingartslakefield.org](mailto:info@performingartslakefield.org) or Bill Robb at 705-927-1603

Play before you get good, because by the time you get good you're too old to play.

— Joey Ramone



## Congratulations Peterborough New Horizon Bands on your "Sound Waves" concert.

Kawartha Wealth Management is a proud supporter of music in our community.

Start a conversation today.



**Kawartha Wealth Management**  
TD Wealth Private Investment Advice  
691 Lansdowne St W, 2nd Floor, Unit 1003  
Peterborough, Ontario K9J 0L1  
Office tel: 705-748-6511  
Toll free: +1 866-999-0608

[advisors.td.com/jamie.tompkins](http://advisors.td.com/jamie.tompkins)

**Kawartha**  
Wealth Management

**TD Wealth**

Kawartha Wealth Management is part of TD Wealth Private Investment Advice, a division of TD Waterhouse Canada Inc. which is a subsidiary of The Toronto-Dominion Bank. ®The TD logo and other TD trademarks are the property of The Toronto-Dominion Bank or its subsidiaries. 1025 6126004



## PERSONALIZED TOTAL WEALTH PLANNING FOR YOUR FINANCIAL NEEDS

Total Wealth Planning is more than just helping you reach your goals but to do so in collaboration with you while addressing the entirety of your life – your family, your business, your future – one facet at a time.

To learn more, visit [otisesmith.ca](http://otisesmith.ca)



**Otis E. Smith, LLB, MBA, CFP®**  
Wealth Advisor  
[otis.smith@scotiawealth.com](mailto:otis.smith@scotiawealth.com)  
705.876.3702  
ScotiaMcLeod® is a division of Scotia Capital Inc.

**Scotia Wealth Management.**

® Registered trademark of The Bank of Nova Scotia, used under licence. Scotia Wealth Management® consists of a range of financial services provided by The Bank of Nova Scotia (Scotiabank®); The Bank of Nova Scotia Trust Company (Scotiabank®); Private Investment Counsel, a service of 1832 Asset Management L.P.; 1832 Asset Management U.S. Inc.; Scotia Wealth Insurance Services Inc.; and ScotiaMcLeod®, a division of Scotia Capital Inc. Wealth advisory and brokerage services are provided by ScotiaMcLeod, a division of Scotia Capital Inc. Scotia Capital Inc. is a member of the Canadian Investor Protection Fund and the Investment Industry Regulatory Organization of Canada.





# NURSING FOOT CARE

ADVANCED DIABETIC FOOTCARE  
COMPRESSION FITTER

## MyFootNURSE

www.myfootnurse.com

+1 (705) 991-2983

Music expresses that which cannot be said and on which it is impossible to be silent. — Victor Hugo




## Package *Plus* Inc.

Services

### Your Printing, Shipping & Video Experts

- Custom Printing & Graphic Design Services ✓
- Video Transfers from VHS to DVD / USB ✓
- Shipping with All Major Couriers ✓

(705) 749-1661
 info@packageplus.ca



**THE EARTH FOOD STORE**

THE HEALTHY ALTERNATIVE

**Chakib Hammoud Ph.D**

406 1/2 George St. N.  
Peterborough ON. K9H 3R5

PH: 705-740-2313  
FAX: 705-740-2443

info@earthfood.ca  
info@hananenterprise.com

www.earthfood.ca  
www.hananenterprise.com

- \* Herbal pharmacy (1st in Peterborough)
- \* Books
- \* Vitamins, minerals & herbs
- \* Macrobiotic products
- \* Bach Flower remedies
- \* Essential oils
- \* Homeopathic remedies
- \* Food supplements
- \* Protein

**MULTI-VITAMINS**

3 MILLIPOGONS PROVIDES INGREDIENTS


Vitamin A.....	8000 IU
Beta-Carotene.....	2000 IU
Vitamin C.....	1000mg
Vitamin D.....	400 IU
Vitamin E (Mixed Tocopherols Beta).....	400 IU
B1 - Thiamine.....	50mg
B2 - Riboflavin.....	50mg
B3 - Niacin.....	50mg
B5 - Pantothenic Acid.....	300mg
B6 - Pyridoxine Hydrochloride.....	50 mg
Folic Acid.....	1000mg
B12 - Methylcobalamin.....	700 mcg
Biotin.....	300 mcg
PABA - Para Amino Benzoic Acid.....	50mg
Calcium Citrate.....	500mg
Iron Glycinate.....	15mg
Iodine.....	100 mcg
Magnesium Citrate.....	500mg
Zinc Aspartate.....	200mg
Copper Gluconate.....	2mg
Manganese.....	1mg
Chromium Picolinate.....	200mcg
Phosphorus Citrate.....	100 mg
Choline Bitartrate.....	200mg
Inositol.....	300mg
Glucosyl Sulfonamide.....	200mg
Glucosyl Dehydroate.....	25mg
Vanillin Sulfate.....	40mg
Alpha Carotene.....	100 mcg
Demerol.....	5mg
Lutein.....	5mg
Trace Minerals.....	10mg

**AMINO ACIDS**

L-Leucine.....	500mg
L-Isoleucine.....	500mg
L-Lysine.....	500mg
L-Valine.....	500mg
L-Tryptophan.....	500mg
L-Threonine.....	500mg
L-Methionine.....	500mg
L-Phenylalanine.....	500mg
L-Arginine.....	500mg
L-Cystine.....	500mg
L-Tyrosine.....	500mg
L-Histidine.....	500mg
L-Glycine.....	500mg
L-Serine.....	500mg
L-Carnitine.....	500mg
L-Glutamine.....	500mg
L-Proline.....	500mg

## Multi-Nutrient

Feel Great & Rejuvenate



Chakib Hammoud Ph.D.  
Master Herbalist

**500 ml**

Co-Q10.....	50mg
Ginkgo Biloba Extract.....	50mg
Hawthorn Berry Extract.....	50mg
Boxen Citrate.....	1mg
Fennel Extract.....	50mg
Astragalus Extract.....	100mg
Rosemary Extract.....	100mg
Alpha Lipoid Acid.....	50mg
Grape Seed Extract.....	20mg
Albata (vitamin K - Albata chlorophyll/K Chlorophyll.....	300mg
MCT (Medium Chain Triglycerides).....	30mg
Sesame Hydrochloride.....	50mg
Whey Protein.....	1000mg

to the base of Blueberry, Pineapple concentrate and pure honey.

**DIRECTIONS:** Take 1 or 2 table spoons with water or juice on empty stomach in the morning. Shake well before each use. Refrigerate after opening.

**WARNING:** Consult your Health Professional before using this product or any other products. This product contains no yeast, dairy, soya, corn, gluten or any artificial preservatives. This product is sealed for your protection. Do not use if seal is broken.

**MISE EN GARDE:** consulter un professionnel de la santé avant d'utiliser ou, ou aucun produit. Consulter un médecin si vous êtes enceinte/allaiter, prenez des médicaments ou avez une condition médicale. Garder hors de la portée des enfants. Ce produit ne contient aucune levure, produit laitier, maïs, soja, gluten ou agent de conservation artificiel. Ce produit est scellé pour votre protection. Ne pas utiliser si le sceau de sécurité est brisé. Purifié et contenu garanti. Fabriqué selon les normes BPF. Supplément alimentaire. Fabriqué au Canada.

**Manufactured by:** Hanan Enterprise  
7 P.O. Box 811  
Lindsay, Ontario, Canada  
K2L 2N2  
Contact us at: info@hananenterprise.com

**Manufactured by:** Hanan Enterprise  
7 P.O. Box 811  
Lindsay, Ontario, Canada  
K2L 2N2  
Contact us at: info@hananenterprise.com

Music is the universal language of mankind. — Henry Wadsworth Longfellow



BUILDING TO PERFECTION

**ADAM CHURCHILL**

OWNER/OPERATOR

(705) 313-5885

churchillcustomcarpentry@gmail.com

Custom Builds ~ Custom Woodworking  
Additions ~ Renovations ~ Steel Roofs  
Windows ~ Doors ~ Concrete Work

Red Seal Licensed Carpenter ~ Fully Insured



*The easiest way to avoid wrong notes is  
to never open your mouth and sing.  
What a mistake that would be.*

— Pete Seeger

*Come Join Us!*

The financial world can feel unapproachable.  
We're here to change that.

Simplify Your Retirement Journey

**RPS**

Your Retirement  
Planning Simplified

Joe Curry  
Certified Financial Planner

HARMONY  
ADVERTISER

Check out RPS logo  
at [www.pnhb.ca](http://www.pnhb.ca)

[www.retirementplanningsimplified.ca](http://www.retirementplanningsimplified.ca)

705-743-9064



Winner of Multiple



At Auto Connect Sales you'll find a vehicle you can trust, from people you can trust. They're the same friendly faces that you've know for years. We've got a huge selection... and we get the Good Stuff!



1175 Lansdowne Street West  
Peterborough, Ontario K9J 7M2  
(705) 741-1777  
Fax: (705) 750-1239  
[www.autoconnectsales.ca](http://www.autoconnectsales.ca)

## 4TH LINE THEATRE 2026 SUMMER SEASON



*Schoolhouse, 2007. Photo by Wayne Eardley, Brookside Studio.*

### Schoolhouse

Written by Leanna Brodie, Directed by Monica Dottor  
June 30 – July 25



*Wild Irish Geese, 2025. Photo by Wayne Eardley, Brookside Studio.*

### Wild Irish Geese

Written by Megan Murphy, Directed by Kim Blackwell  
August 4 - August 29

BOX OFFICE:  
705-932-4445 or 1-800-814-0055  
[4thlinetheatre.on.ca](http://4thlinetheatre.on.ca)



Follow us



**Water Depot**  
WATER AT ITS BEST  
**PLANNING A Fundraiser?**

Looking for Water or a Donation For Your Event?



We can help, simply fill out the form attached to this QR code and we will be in touch.

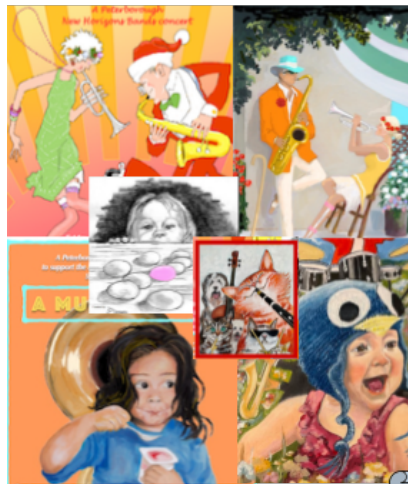
Please note that we require at least 7 weeks notice for Water Donations Requests. Request approval based on availability & in our discretion.



St. Luke's Anglican Church  
566 Armour Rd., Peterborough ON K9H 1Z1  
Phone: 705-742-6202  
Email: [secretary@saintlukes.ca](mailto:secretary@saintlukes.ca)  
WEB: [www.saintlukesanglican.ca](http://www.saintlukesanglican.ca)  
*We welcome everyone!*

*Peter Hannore*  
Photography

Specializing in pets, sports and event photography.  
(705) 312-2040  
<https://instagram.com/phanmorephoto/>



All artwork by Wayne Mutton

- PNHB**  
Making a Difference
- Lion's Club (Service Dog Training Program)
  - LAWS
  - MS Society
  - Food for Kids
  - United Way
  - Breast Cancer
  - Canadian Mental Health Association
  - 5 Counties Children's Centre
  - Quilts for Cancer
  - Community Care
  - Ptbo/County

[www.sallywolf.ca](http://www.sallywolf.ca)

*The Sally Wolf*  
Flute & Recorder Studio  
↓ RCM; RMT ↓  
London Street  
Phone: 705-559-6357

# ASTA PROFESSIONAL

*Book an Appointment*

---

CUT & BLOWDRY

---

HAIR COLOURS

---

EYE LASH EXTENSIONS

---

HEAD SPA

---

PHONE 705-743-2020

---

LOWER LEVEL OF THE  
ASTA SPIRIT PLAZA

---

856 CHEMONG RD  
PETERBOROUGH

One good thing about music is that when it hits you, you feel no pain. — Bob Marley



**Come Join Us!**




**Diane Wilkinson**  
Norwex Independent Consultant

Global Mission:  
Sharing a cleaner, safer way of living by reducing harmful chemicals in everyday lives

(705) 341-7980  
[microfibermiracles@gmail.com](mailto:microfibermiracles@gmail.com)

To shop, see the catalog, or join my team go to:  
[norwex.com/dianewilkinson](http://norwex.com/dianewilkinson)



**JOHN McGOEY** (Vinnie)

Honestly driven.  
Since 1953



PHONE: 705-745-1122  
EMAIL: [peterborough@oktire.com](mailto:peterborough@oktire.com)

665 The Parkway  
Peterborough, ON K9J 7K2

[www.oktire.com](http://www.oktire.com)



Craft Beer  
 Delicious Food  
 Friendly Staff  
 Great Patios  
 And a Pretty Good  
 Wine List too!

**ASHBURNHAM**  
**ALE HOUSE**  
 CRAFT BEER CAFE

Located just a 10 minute  
 walk from the Lift Locks

**Brunch on**  
**Saturdays & Sundays**  
**from 9 am - 2 pm**

128 HUNTER STREET EAST | PETERBOROUGH | EAST CITY | 705.874.0333

**ASTROM REALTY GROUP**  
*real people, real homes, real results*



**#1 Duo Team**  
 Bowes & Cocks  
 Brokerage, 2024 & 2023\*

Your trusted  
 guides to buying  
 and selling.

\*based on closed  
 transactions from Dec  
 1, 2023-Nov 30, 2024



**TAMMIE ASTROM & ANDREW ASTROM**  
 Realtors®  
 705.933.1156  
 Visit [astrom.ca](http://astrom.ca) for more information

*Proud Supporter of Music  
 in our Community.*

SALES · RENTALS · REPAIRS · LESSONS  
 ONLINE SHOPPING @ [LONG-MCQUADE.COM](http://LONG-MCQUADE.COM)



HARMONY  
 ADVERTISER  
 Check out Long  
 and McQuade  
 logo at  
[www.pnhb.ca](http://www.pnhb.ca)

 **Long & McQuade**  
 MUSICAL INSTRUMENTS  
[long-mcquade.com](http://long-mcquade.com)  
 129 Aylmer Street North · (705) 742-5332

**Music is a more potent instrument than any  
 other for education.**

— Plato

## The Production Team

**Concert Managers:** Beverly Murphy (Lead), Christina Melaney, Lori Wilson  
**Conductor Liaison:** Sal Castiglione  
**Master of Ceremonies:** Heather Thompson  
**Ticket Table:** Pat Wade (Coord.)  
**Publicity:** Pat Wade (Chair), Bev Murphy  
**Finance:** Cindy Babcock, Pat Wade  
**Video:** Suzanne Gagne  
**Photos:** Peter Hanmore  
**Concert Poster:** James Burrett (AI image), Maria Castiglione  
**Concert Program:** Maria Castiglione, Kathleen Hawley (Editing)  
**Ticket Design:** Bev Murphy  
**Ticket Sales Reps:** Helen Riddell/Sue MacLellan (Green), Mary Kay (Jubilee), Audrey Keitel (Allegro), Bev Murphy (Skylark), Heather Thompson (Odyssey)  
**Percussion Coord:** Steve Effer, Allan Kelly  
**PNHB Music Library:** Meeta Ellison (Librarian) and Team

## Concert Day Volunteers

Harlene Annett, Mary Bark, Cathy Breedon, Mike Broersma, Mary Dunn, Steve Effer, Suzanne Gagne, Deb Haigh, Vikki Homewood, Jacqueline Jacobson, Audrey Keitel, Allen Kelly, Mark Mckinley, Christina Melaney, Tori Owen, Phil Panter, Dave Powell, Royce Adderley, Margaret Seabrook, Mel Shannon, Barbara Simone, Mark Terry, John Topic, Pat Wade, Rieta Weaver, ValleyYang  
**A special thanks to the many PNHb members not on this list for their contribution to the success of this event.**

**The Power of Your Donation** (article) Wayne Mutton  
**Input By:** Ian Crawford, Maria Castiglione, Evan Thomas  
**Quotes:** Maria Castiglione, Jenny Rudell  
**Ads:** Diana Abraham, John Andela, Harlene Annett, Tom Bell, Cathy Breedon, Beverly Bresee, Roger Bresee, Maria Castiglione, Barb David, Ann Dunford, Steve Effer, Jim Hill, Priscilla Hurlington, Jaqueline Jacobson, Marcia Johnston, Mary Kay, Jenny Rudell, Margaret Seabrook, Barb Simone, Annie Stovell, Evan Thomas, Diane Wilkinson

**PNHB Board of Directors:** Marcia Johnston (President/Chair), Kelly Gravelle (VP), Lisa Witherington (Secretary), Christina Melaney, Phil Panter, Phil Pellat, Evan Thomas, Pat Wade



## PNHB OPEN HOUSE at Living Hope Church WED SEPT 9 & MON SEPT 14

Come see a band rehearsal or a sectional.  
**We'll answer your questions.** Curious about playing an instrument? Where would you fit in our bands? Interested but don't know what instrument to play? Just interested in learning to play your favourite instrument? Or just come to join us!

**Trevis Optometry**  
234 Hunter St W.,  
Peterborough, ON K9H 2L3  
**705-745-6338**  
[www.trevisoptometry.com](http://www.trevisoptometry.com)  
[drtrevis@trevisoptometry.com](mailto:drtrevis@trevisoptometry.com)

**OUR SERVICES INCLUDE:**  
Comprehensive Eye Exams  
Emergency Appointments  
Prescription Checks  
Contact Lens Fit & Teach  
Contact Lens Ordering

Retinal Imaging & OCT  
Visual Fields  
LASIK Pre and Post-Op  
Advanced Dry Eye Care  
Myopia Progression Control

**Music is the shorthand of emotion.**

— Leo Tolstoy

**Music can name the unnameable and communicate the unknowable.**

— Leonard Bernstein

**DARLINGINSURANCE**  
"Proud of Our Past, Positive About Our Future"

- ✓ Home/Tenants
- ✓ Auto/Recreational
- ✓ Business
- ✓ Farm Agri-business
- ✓ Cottage/Watercraft

For more Insurance Information:  
Call us: 705 742 4245  
Toll free: 1 800 387 1627  
[info@darlinginsurance.net](mailto:info@darlinginsurance.net)  
[www.darlinginsurance.net](http://www.darlinginsurance.net)

193 Aylmer St. N. Peterborough  
144 Queen St. Unit 4 Lakefield  
32 King St. E. Omeme



The Peterborough Concert Band is an award-winning wind ensemble that has served the Peterborough region for 168 years. You can catch us at the following public events:

Date (2026)	Time	Location
<b>Sunday, July 5</b> <i>Rain date July 12</i>	2:00 – 4:00 pm	Riverview Park and Zoo Gazebo
<b>Thursday, July 30</b> <i>No rain date</i>	7:00 – 9:00 pm	Jalynn Bennet Amphitheatre Traill College
<b>Saturday, September 12</b> <i>No rain date</i>	12:00 – 12:45 pm	Millennium Park Big Band Day
<b>Sunday, November 8</b> <i>Tickets \$25</i>	2:30 – 4:00 pm	Market Hall 140 Charlotte St, Peterborough
<b>Saturday, December 5</b> <i>Seasonal Music</i>	3:45 – 4:45 pm	Peterborough Square Mall Foot of the escalator



**"Music is the movement of sound to reach the soul for the education of its virtue."**  
— Plato

**Priscilla Hurlington**  
hurlingtonmusic@gmail.com  
705-930-9699

We provide the best quality music education to young children by blending the pleasure and the joy of music making with sound instruction.



myc.com

**Music is the wine that fills the cup of silence.**  
— Robert Fripp

**The music is not in the notes, but in the silence in between.**

— Wolfgang Amadeus Mozart

## SKYLARK BAND

**Flute:** Maureen Corrigan, Heather Drysdale, Elsie Ensing, Linda Guilfoil, Deb Harvey, Jenny Rudell, Anne Somers-Mountjoy **Oboe:** Curtis Bryan, Eric Sloan **Clarinet:** Jane Barnes, Kathy Conley, Kay Anne Houghton, Nancy Pakenham, Annie Stovell, Susan Vallery **Bass Clarinet:** Gary Graham, Janice Sloan **Bassoon:** Elfi Mandeljc **Alto Sax:** Jim Chesher, Lynn Dragomir, Tim Hicks **Tenor Sax:** James Burrett, Karen Hickey **Trumpet:** Cathy Breedon, Kim Bryan, Sue MacLellan (Band Rep), Bev Murphy **French Horn:** John Andersen, Judy Carleton, Mir Delisle-Oldham **Trombone:** Jane Darling, Jacqueline Jacobson, Dave Mahy **Euphonium:** Beverly Bresee **Tuba:** Roger Bresee **Percussion:** Mary Bark, Tom Bell, Norma White, Valley Yang **Bass:** Tom Bell

## ODYSSEY BAND

**Flute:** Sharon Kemp, Jane Langlotz, Karen Maki, Chris McCarthy, Dianna Scates, Heather Thompson (Band Rep) **Oboe:** Lorna Devan, Barbara Simone, **Clarinet:** Diana Abraham, Harlene Annett, Angela Con, Deanna Hawley, Kathleen Hawley, Vikki Homewood, Pat Williams **Alto Clarinet:** Deanna Hawley **Bass Clarinet:** Marlys Kerkman **Bassoon:** Pat Wade **Soprano Sax:** Deanna Hawley **Alto Sax:** Sharon Raby, Patty Reder, Pat Watson, Christine Williamson **Tenor Sax:** Karen Bowen, Deb Haigh **Baritone Sax:** Cindy Babcock **Trumpet:** John Devan, Bob Orrett, Perry Sisson **French Horn:** Trish Murphy, John Topic **Trombone:** Susan Mellow, Heather Rumble **Euphonium:** Steve Effer, Margaret Kean **Tuba:** Phil Pellat **Percussion:** Margaret Allen, Allan Kelly, Philip Panter

## THE FRENCH HORN LEGION (pre-concert musicians)

John Andersen, Judy Carleton, Mir Delisle-Oldham, Ann Dunford, Guy Hanchet, Trish Murphy, John Topic, Theresa Topic

## INSTRUMENT COACHES

John Barrett (Saxophone), Medda Burnett (Green: Low Brass/Woodwind), Sal Castiglione (Clarinet), Nick Gilroy (Percussion), Peter Hanmore (Low Brass/Woodwind), Ben Jackson (Flute), Trish Murphy (French Horn), Tori Owen (Oboe/Bassoon), Charmaine Prole (Trumpet)

*Come Join Us!*

**No experience necessary!**

Learn to read music and play an instrument in our Green Band.

**You have played before?**

Join one of our concert bands and ensembles.

For fun, fellowship, learning, and a healthy activity, it's never too late to start...

Go to: [www.pnhb.ca](http://www.pnhb.ca) or Email: [info@pnhb.ca](mailto:info@pnhb.ca)



## THE MUSICIANS

### ALLEGRO BAND

**Flute:** Lucie Bonter, Elsie Ensing, Martha Gooderham, Linda Guilfoil, Rose Mary Hughes, Susan Muir, Teresa Postma, Berenice Ruhl, Hedy Shirchenko **Oboe:** Lori Wilson **Clarinet:** Diana Abraham, Mary Chesher, Jan Edwards, Meeta Ellison, Paulette Nichols, Dianne Page, Margaret Seabrook **Bass Clarinet:** Gary Graham **Bassoon:** Priscilla Hurlington **Alto Sax:** Barbara David, Jim Hill, Jane Langlotz, Karen Mooney **Tenor Sax:** Dave Birch, Wayne Mutton, Sandy Taylor **Baritone Sax:** James Burrett **Trumpet:** Julie Cullen, Quentin Day, Marcia Johnston, Audrey Keitel, Katie Maynard **French Horn:** Guy Hanchet, Trish Murphy **Trombone:** Maggie Chambers, Steve Effer, Colleen White-Goodchild **Euphonium:** Martha Comfort, Sue MacLellan (Band Rep) **Tuba:** Josie Bieler, Alison Voss **Percussion:** Stephen Kemp, Ruth Mathews, Zijing Yan **Mallet Percussion:** Renée Paul

### JUBILEE BAND

**Flute:** Kathy Conley, Sharon Dickson, Pamela Martin, Marilyn Twiss **Oboe:** Lori Wilson **Clarinet:** Suzanne Gilbert, David MacRae, Wendy Remisch, Alicia Ridley, Diane Wilkinson **Bass Clarinet:** Harry Stoffers **Alto Sax:** Margaret Allen, Maria Castiglione, Ian Crawford, Anita Mahy, Rick Robinson, Manny Schmidlechner, Brian Slack **Tenor Sax:** Oscar Haule, Allan Kelly **Trumpet:** John Andela, Christine Clark, Earle Henderson, Christina Melaney, Evan Thomas **French Horn:** John Andersen, Ann Dunford, Theresa Topic **Trombone:** Al Brunger, Phil Unger **Euphonium:** Ruth D'Ornellas, Nancy Shoemaker **Tuba:** Tim Holland, Jenny Rudell **Percussion:** Suzanne Gagne, Vedra Hill, Valley Yang **Mallet Percussion:** Mary Kay (Band Rep)

### GREEN BAND

**Flute:** Mike Con, Janice Davis, Christine Dominico, Frances James, Darlene Lucas, Kathy MacMillan-Jones, David McPherson, Gail Noble, Pat Shillings, Ian Toms **Clarinet:** Ici Clarke, Jen Edwards, Oscar Haule, Sheila Keay, Wendy Marrs, Fred Reder **Alto Sax:** Carole Bojin **Baritone:** Mary Kay **Trumpet:** Christine Clark, Angela Con, Suzanne Gagne, Ruth Mathews, Mark McKinley, Christina Melaney, Patty Reder, John Tyrell **French Horn:** Cynthia Carey, Margaret Chapman **Trombone:** Tim Holland, Paul King-Fisher **Baritone:** Bob Gibbs **Euphonium:** Nancy Shoemaker, Mark Siegel **Percussion:** Rita Bonneville, Carol Multamaki, Teresa Postma **String Bass:** Sue MacLellan



PETERBOROUGH  
WELLNESS GROUP  
291 Charlotte Street  
705 748 6611

*Celebrating* **1 YEAR**

*at our New Charlotte Street Location,*



Chiropractic • Massage • Acupuncture  
Concussion Rehabilitation • Osteopathy  
Direct Billing, WSIB & MVA Accepted



SCAN TO BOOK  
AN APPOINTMENT

291 Charlotte Street, Peterborough  
705-748-6611

*Working Together For Your Health* ✨





# Omeme Veterinary Hospital

128 King Street West

Omeme, Ontario

1-705-799-5228

[omemevet@xplornet.com](mailto:omemevet@xplornet.com)

Website [omemeveterinaryhospital.com](http://omemeveterinaryhospital.com)

Let's get  
Social



Facebook



Instagram



We treat your pets like family.

## CONDUCTORS' NOTES - GREEN BAND continued

ballad... ICE. On to the island of Cuba for the spicy **GUANTANAMERA...** FIRE. To conclude, back to Sweden for Abba's hot power ballad **THE WINNER TAKES IT ALL...** FIRE and ICE. *Mark Hiscox*

### SKYLARK BAND

**CEREMONY, CHANT AND RITUAL** is a bold and expressive piece that evokes all the emotions and feelings suggested in the words of the title: it is bold, mysterious, and energetic. **WALTZ NO. 2** from Shostakovich's *Suite for Variety Stage Orchestra* (aka Jazz Orchestra) neatly combines his sardonic wit with apparent simplicity gliding over hidden complexity. *Ben Jackson*

**THE QUEEN OF SOUL** features three hits by Aretha Franklin: *Respect, A Natural Woman, and Think.* **CARRICKFERGUS** is a traditional Irish folk song that plays above a clarinet choir at first, then includes the whole band for dramatic effect. **SALUTE TO LOUIS ARMSTRONG** includes four of his most famous hits. You will most likely recognize all of them. *Medda Burnett*

### ODYSSEY BAND

**NETTLETON** might be my favourite hymn tune of all time. Hymn tunes seem to fit the concert band orchestration so very well and this is certainly no exception. **METAL!** is a collection of tunes played originally by heavy metal bands. Here, we play them ON heavy metal! *Justin Hiscox*

**OBLIVION** is a rearrangement; all the players experience the challenge and pleasure of playing solo. The band, divided into two teams, takes turns playing the solo. The middle is a powerful "symphonic unison". Traditional solos are then played by Deanna Hawley, Phil Pellat, Deb Haigh, Christine Williamson, and Trish Murphy. The final two bars build into a last powerful chord. **SECRET VALLEY** portrays the mystery and wonder of nature's handiwork: a misty morning, an unexpected forested valley, a grand mighty river, and a burst of colorful foliage. **THE DOORS** are among the most controversial, influential, and unique, rock acts of the 1960s. This medley features *Light My Fire, People are Strange, and Hello, I Love You.* *Sal Castiglione*

## Conductors' Notes

### ALLEGRO BAND

**DISCOVERY** reflects the joy and excitement of making great discoveries: inventions, energies, new lands. Composed in contrasting sections of staccato and legato articulation with a constant rhythmic feel. First recorded by Louis Prima and the New Orleans Gang (1936), **SING, SING, SING** became a big band standard. Benny Goodman's recording (1937) was inducted into the Grammy Hall of Fame (1982).

*Sal Castiglione*

**COMEDY CLASSICS** is a joyful collection of theme music from TV comedies. **KINGSFOLD** is a beautiful old hymn tune. **GOD ONLY KNOWS** is a Beach Boys classic penned by the great Brian Wilson.

*Justin Hiscox*

### JUBILEE BAND

Pete Townshend, co-founder of *The Who*, wrote **MY GENERATION** in 1965 for his band. It is still popular today. **TROMBONE BLUES** features the trombones, especially near the end, using their slides to great advantage. Listen for them!

*Medda Burnett*

**THE WATER IS WIDE** is a beautiful English folk song that dates back to the 1600s, arranged poignantly for concert band. **I WANT TO HOLD YOUR HAND**, recorded by The Beatles, is a classic of rock and roll. **FRAGILE** is part of *The unBroken Project*, a series of pieces dealing with the struggles of mental illness. Sometimes these challenges can be overcome, but not always. *Fragile* reflects on the darker side of the struggle, and in it you will hear sounds not usually associated with band music, such as extreme dissonances, random note timing, and unresolved chords that convey in music the human battle with mental health conditions. **MARCH of the HOBGOBLINS** shows Standridge's lighter side where he explores, musically, the Hobgoblin, who in fairy tales was a mischievous imp. Enjoy.

*Ben Jackson*

### GREEN BAND

We're naming our program "FIRE and ICE". I'll explain. We'll start at the very beginning. **DO-RE-MI** from *The Sound Of Music*, a musical which features an escape through the Swiss Alps... ICE. **MAH-NA MAH-NA** featured in the Italian movie *Sweden: Heaven and Hell...* ICE and FIRE. Next to the movie *Ice Castles*, for a beautiful

Need a refreshing new kitchen or bathroom?

anden  
kitchen & bath centre

We design and build dreams!

Visit our showroom or give us a call today for your FREE personalized quote!

Anden Kitchen and Bath Centre  
888 Crown Drive, Peterborough - 705.749.9595  
andenkitchenbath.com

DREAM · DESIGN · SHOP · BUILD



*Music has healing power. It has the ability to take people out of themselves for a few hours.*

— Elton John

*Music is a safe kind of high.*

— Jimi Hendrix

# THE MUSIC

**The French Legion**, led by Trish Murphy  
Pre-concert performance (Lobby)

Welcome by M.C.

Heather Thompson

O Canada

## ALLEGRO BAND

Conductors: Sal Castiglione, Justin Hiscox

- Discovery ..... Ryan Meeboer
- Sing, Sing, Sing ..... Louis Prima (arr. Michael Story)
- Comedy Classics ..... Various (arr. Paul Murtha)
- Kingsfold ..... Traditional (arr. Johnnie Vinson)
- God Only Knows ..... Brian Wilson (arr. Michael Brown)

## JUBILEE BAND

Conductors: Medda Burnett, Ben Jackson

- My Generation ..... Pete Townshend (arr. Douglas E. Wagner)
- Trombone Blues ..... Andrew Balent
- The Water is Wide ..... (arr. Vince Gassi)
- I Want to Hold Your Hand ..... John Lennon, Paul McCartney  
..... (arr. Johnnie Vinson)
- Fragile ..... Randall D. Standridge
- March of the Hobgoblins ..... Randall D. Standridge

**COME PLAY WITH US!**



### No experience necessary!

Learn to read music and play an instrument in our Green Band.

For fun, fellowship, learning, and a healthy activity, it's never too late to start...

For more information go to: [www.nhbp.ca](http://www.nhbp.ca) or email: [info@pnhb.ca](mailto:info@pnhb.ca)

## GREEN BAND

Conductor: Mark Hiscox

- Do-Re-Mi ..... Rodgers/Hammerstein (arr. Paul Lavender)
- Mah-Na-Mah-Na ..... Umiliani (arr. Johnnie Vinson)
- Theme from "Ice Castles" ..... Hamlisch/Bayer Sager  
..... (arr. Michael Story)
- Guantanamo ..... Traditional (arr. Victor Lopez)
- The Winner Takes It All ..... Andersson/Ulvaeus  
..... (arr. Paul Murtha)

## SKYLARK BAND

Conductors: Ben Jackson, Medda Burnett

- Ceremony, Chant and Ritual ..... David Shaffer
- Waltz No. 2 ..... Dmitri Shostokovich (arr. James Curnow)
- The Queen of Soul ..... (arr. Paul Murtha)
- Carrickfergus ..... (arr. Patrick Roszell)
- Salute to Louis Armstrong ..... (arr. Eric Osterling)

## ODYSSEY BAND

Conductors: Justin Hiscox, Sal Castiglione

- Nettleton ..... Traditional (arr. Johnnie Vinson)
- Metal! ..... Various (arr. Sean O'Loughlin)
- Oblivion ..... Astor Piazzolla (arr. R. Longfield)  
..... (re-arr. for Odyssey Sal Castiglione)
- Secret Valley ..... Michael Sweeney
- The Doors on Tour ..... Credited to all The Doors  
..... (arr. P. Roszell)

**COME PLAY WITH US!**



### You have played before!

Join one of our concert bands and ensembles.

For fun, fellowship, learning, and a healthy activity, it's never too late to start...

For more information go to: [www.pnhb.ca](http://www.pnhb.ca) or email: [info@pnhb.ca](mailto:info@pnhb.ca)